

FFP2 Disposable Half Mask

This disposable particle filtering half mask is compliant with the European Standard UNI EN149:2001+A1:2009. It is certified by a European Notified Body and a Category III PPE.

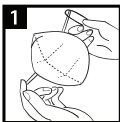
INFORMATIVE NOTE

Read the instruction carefully before use:

CHECK BEFORE USE:

Before using the mask check if there are any holes, tears or any other damages. In case the mask is damaged, **DO NOT USE IT**. Take a new mask instead.

INSTRUCTIONS:



1. Take the ear straps with both hands leaving the nose clip upwards and on the outside.
2. Cover your chin with the bottom half of the mask.
3. Wear the ear straps and adjust the mask to make it comfortable.
4. Using both hands adjust the nose clip so that the mask adheres to the bridge of the nose.
5. Before entering the area where there might be a risk, it is important to check that the mask adheres to your face. Cover the masks with both hands to avoid changing the position of the mask and exhale quickly. If air leaks from the bridge of the nose, adjust the nose clip according to step 4. If air leaks from the edge of the mask, readjust the ear straps. Repeat steps 1-4 if needed.

N.B: Do not enter contaminated areas if the masks doesn't adhere properly. Change immediately the mask if you experience any issues breathing or of the mask gets damaged. In order to use the mask safely, it is of vital importance to follow carefully these instructions.

WARNINGS:

- The user needs to be instructed on how to use the mask.
- If not used properly, the efficiency of the masks can be lessened causing diseases and permanent damages.
- The manufacturer and the distributor won't accept any liabilities if the mask is not used properly.
- Wear the masks and check its efficiency before entering a contaminated area.
- Do not modify the masks in any ways.
- This mask does not provide oxygen. Use it only when the environment is adequately ventilated and with enough oxygen supply. Do not use if the oxygen percentage in the air is less than 19,5%.
- Do not use if you are not aware of the type of contaminants and their percentage in the environment.
- Do not use if there is a risk of explosion or in firefight systems.
- The presence of a beard, long sideburn or certain breathing characteristics can affect the efficiency of the mask.
- Throw away the mask if it has been taken off in a contaminated area, if it is damaged or if breathing is difficult and change it immediately.
- Leave immediately the contaminated area if breathing becomes difficult, if you feel dizzy, anxious or experience other issues.
- The mask, being disposable, must be discarded at the end of its use by disposing of it in compliance with the regulations. Therefore it does not require any kind of maintenance.
- Keep the mask in a dry place, away from direct light.
- This mask can be used for a max of 8 hours and cannot be reused.

Storing conditions - temperature range: -10 °C ~ +40 °C

Storage conditions - maximum relative humidity: <80%

Degree of protections and regulations: produced according to the guidelines of the UNI EN 149:2001+A1:2009 regulation

Retention period: 36 months unopened

Expiry date: see on packaging

Batch: see on packaging

Made in China

Imported and distributed by Polonord Adeste Srl
Via Clodoveo Bonazzi 7, 40013 Castel Maggiore (BO), Italy
Company with UNI EN ISO 9001:2015 quality management system



see on packaging